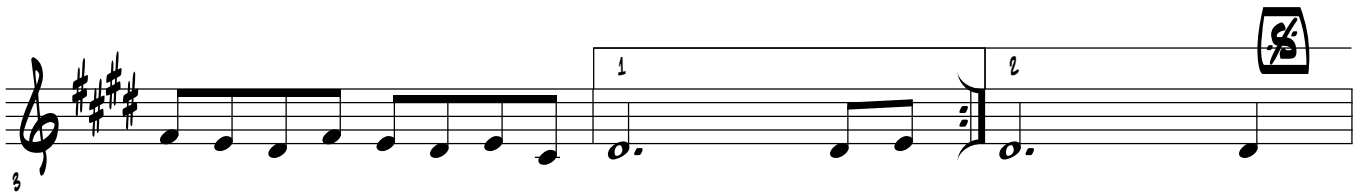


# 15 (rigaudon) Surisijsterl Kermis

Handschrift Van Belle



# 16

Handschrift Van Belle  
Origineel in D



# Den Bastaert

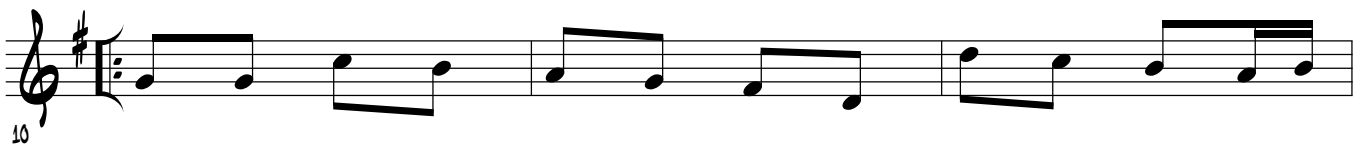
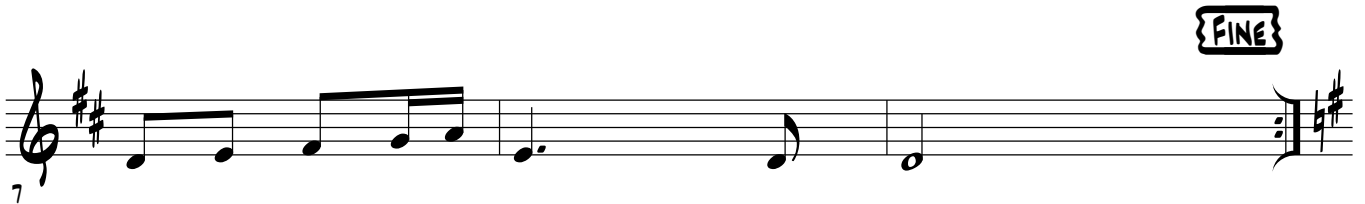
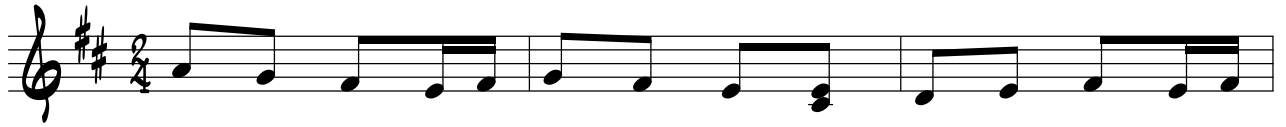
Handschrift Van Belle, nr.17



# 5

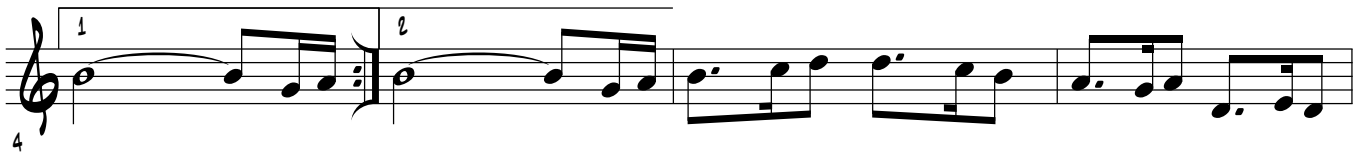
## (Polka of Branle "Swarte Genne")

Handschrift Van Belle, nr. 5



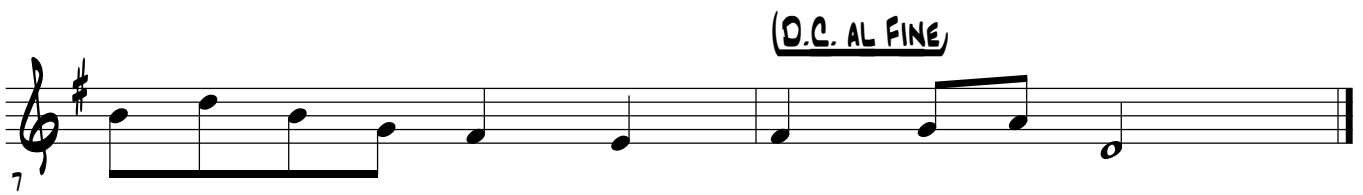
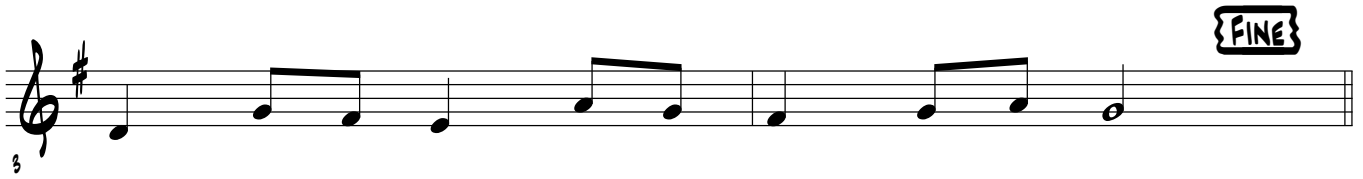
# 53

Handschrift Van Belle



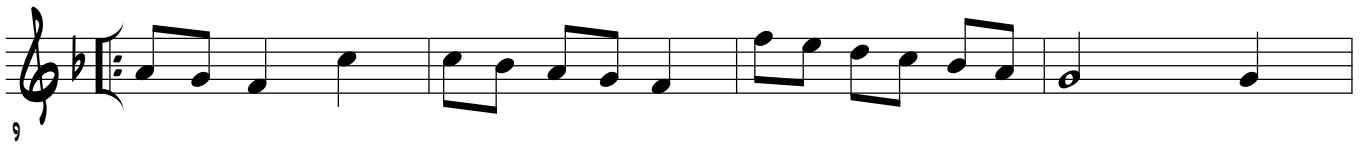
# 54

Handschrift Van Belle, 1743



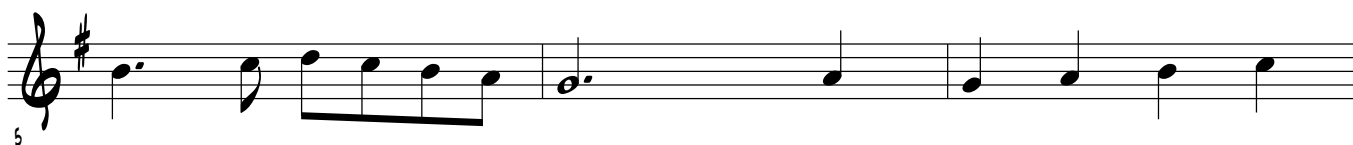
# 56

Handschrift Van Belle, 1743



# 57 (Mars) (Air du Mirliton)

Handschrift Van Belle

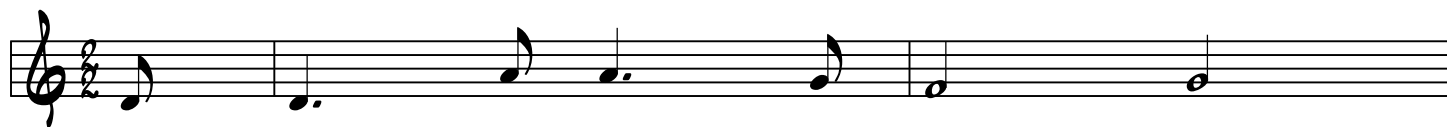




# 61 de Vierhoeck

contradans l'Air des Matelots uit "Alcyone" van M. Marais

Handschrift Van Belle

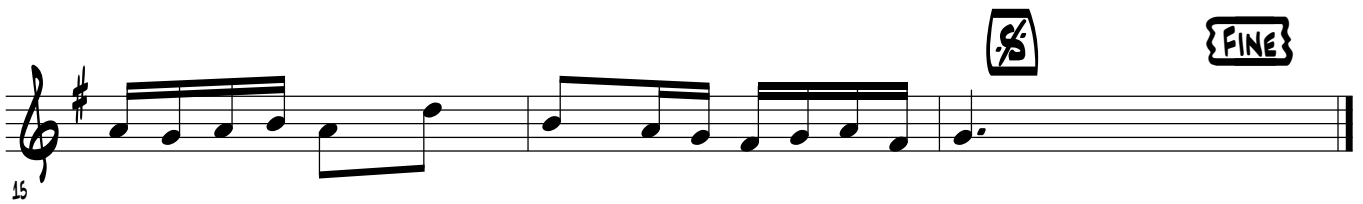
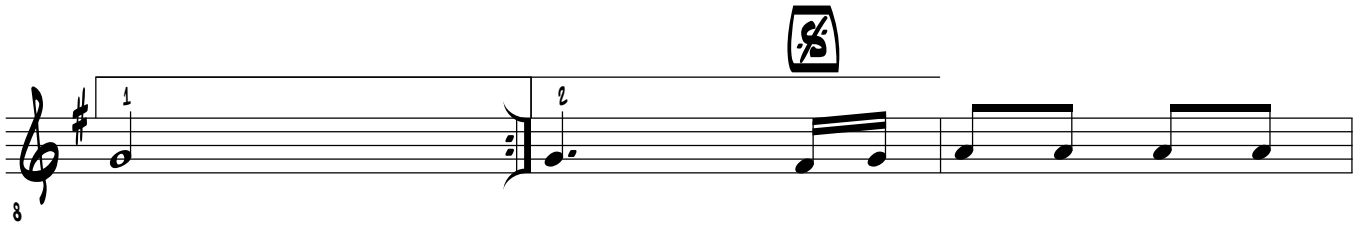






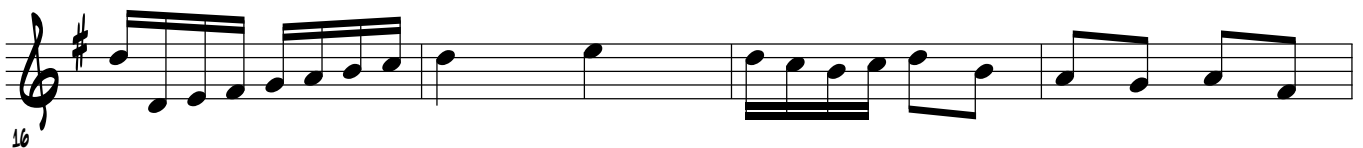
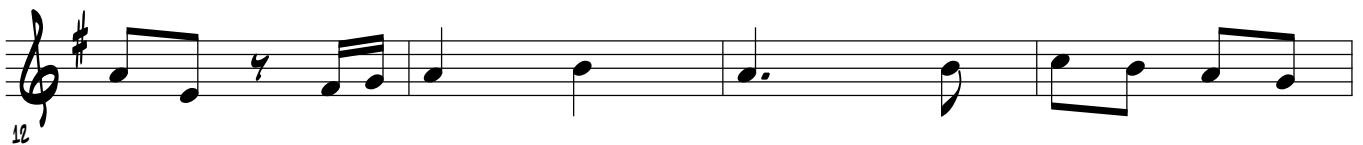
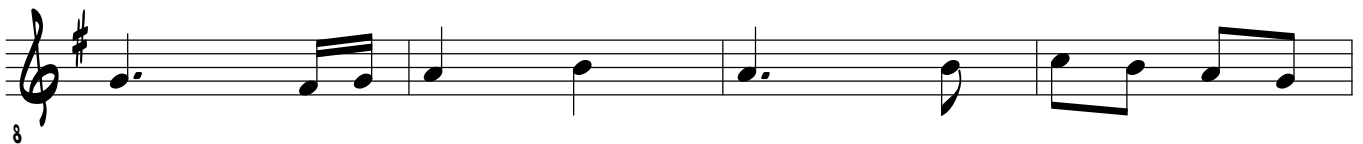
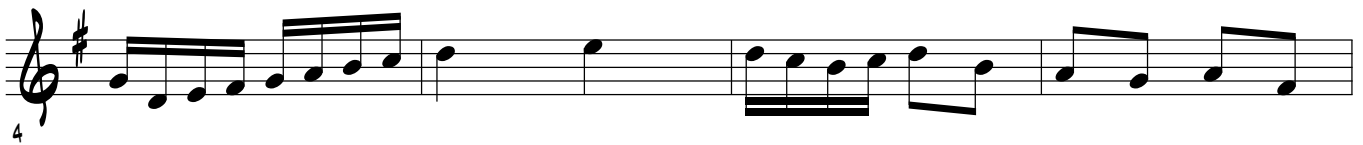
# 71 (Contradans)

Handschrift Van Belle



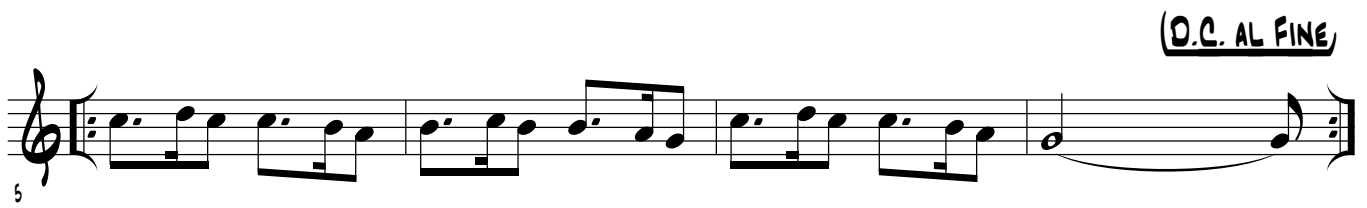
# 78B (Festa Venerabilis)

Handschrift Van Belle



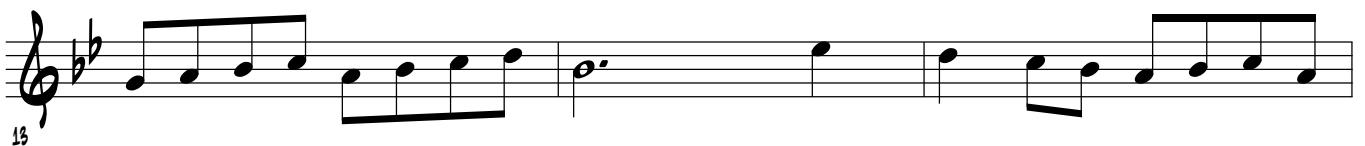
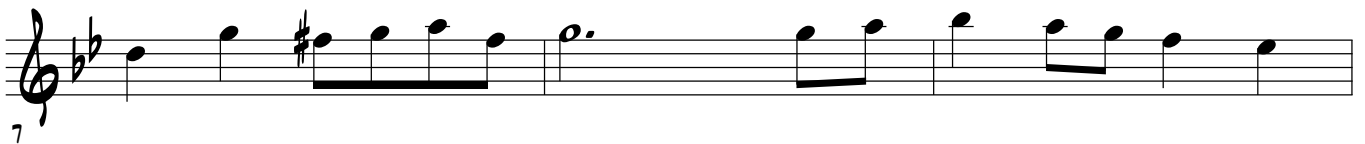
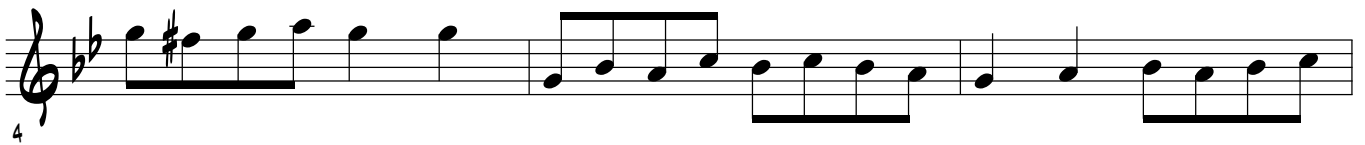
# 81 Bis

Handschrift Van Belle, 1743



# 84

Handschrift Van Belle, nr. 84



# 85 Bis

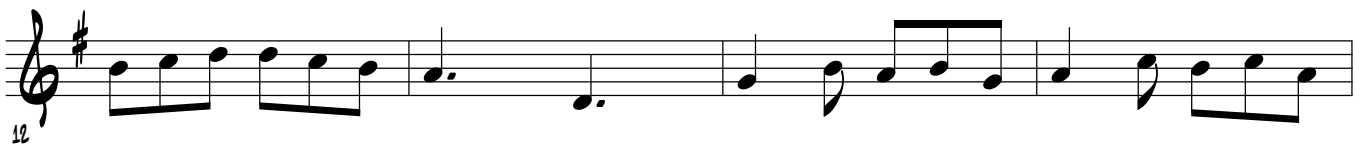
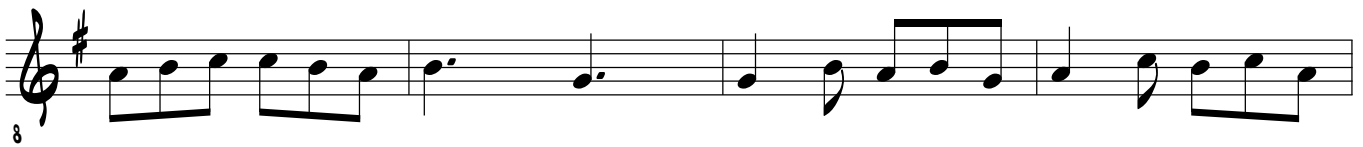
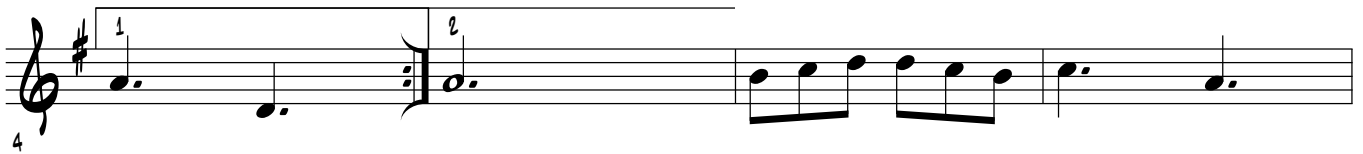
Handschrift Van Belle, 1743





# Contredans nr. 72

Manuscript Van Belle



# Giga

Handschrift Van Belle

The first system of the Giga piece consists of two staves. The upper staff is in treble clef and the lower staff is in bass clef. Both are in the key of D major (one sharp) and 8/8 time. The music features a lively, rhythmic melody with eighth and sixteenth notes, and a supporting bass line with chords and moving lines.

The second system continues the piece. It features a repeat sign in the middle of the system. The upper staff has a melodic line with some chromaticism, while the lower staff provides harmonic support with chords and eighth notes.

The third system begins at measure 11. The upper staff continues the melodic development with eighth-note patterns. The lower staff has a more active bass line with eighth-note accompaniment.

The fourth system begins at measure 16 and concludes the piece. It features a final melodic flourish in the upper staff and a concluding bass line in the lower staff, ending with a double bar line.



# Paspie Novou

Handschrift Van Belle  
AABBCCDD

